

Return of Organization Exempt From Income Tax

2007

Under section 501(c), 527, or 4947(a)(1) of the Internal Revenue Code (except black lung benefit trust or private foundation)

Open to Public Inspection

Department of the Treasury Internal Revenue Service(77)

G The organization may have to use a copy of this return to satisfy state reporting requirements.

A For the 2007 calendar year, or tax year beginning 7/01, 2007, and ending 6/30, 2008

- B Check if applicable: Address change, Name change, Initial return, Termination, Amended return, Application pending

C THE WASHINGTON CENTER FOR PSYCHOANALYSIS, INC. 4545 42ND STREET, NW #309 WASHINGTON, DC 20016

D Employer Identification Number 53-0213312 E Telephone number 202-237-1854 F Accounting method: Cash, Accrual, Other (specify) G

? Section 501(c)(3) organizations and 4947(a)(1) nonexempt charitable trusts must attach a completed Schedule A (Form 990 or 990-EZ).

H and I are not applicable to section 527 organizations. H (a) Is this a group return for affiliates? H (b) If 'Yes,' enter number of affiliates. H (c) Are all affiliates included? H (d) Is this a separate return filed by an organization covered by a group ruling? I Group Exemption Number. M Check if the organization is not required to attach Schedule B.

G Web site: WWW.WASHPSA.ORG

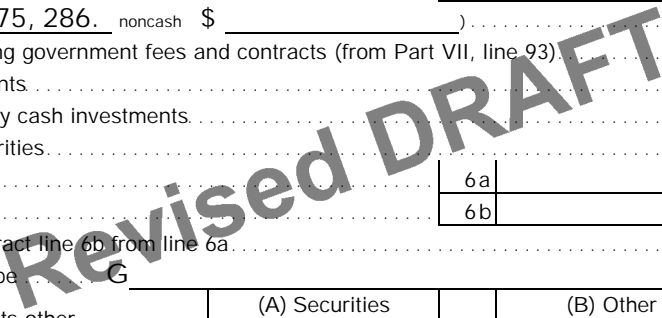
J Organization type (check only one) G 501(c) 3 H (insert no.) 4947(a)(1) or 527

K Check here if the organization is not a 509(a)(3) supporting organization and its gross receipts are normally not more than \$25,000.

L Gross receipts: Add lines 6b, 8b, 9b, and 10b to line 12 G 1,109,802.

Part I Revenue, Expenses, and Changes in Net Assets or Fund Balances (See the instructions.)

Table with columns for Revenue, Expenses, and Assets. Rows include contributions, program service revenue, membership dues, interest on savings, dividends, gross rents, net rental income, other investment income, gross amount from sales of assets, special events, gross sales of inventory, and other revenue. Total revenue is 572,833.



Part II Statement of Functional Expenses All organizations must complete column (A). Columns (B), (C), and (D) are required for section 501(c)(3) and (4) organizations and section 4947(a)(1) nonexempt charitable trusts but optional for others. (See instruct.)

Do not include amounts reported on line 6b, 8b, 9b, 10b, or 16 of Part I.		(A) Total	(B) Program services	(C) Management and general	(D) Fundraising
22a Grants paid from donor advised funds (attach sch) (cash \$ _____ non-cash \$ _____) If this amount includes foreign grants, check here... G <input type="checkbox"/>	22a				
22b Other grants and allocations (att sch) (cash \$ _____ non-cash \$ _____) If this amount includes foreign grants, check here... G <input type="checkbox"/>	22b				
23 Specific assistance to individuals (attach schedule).....	23				
24 Benefits paid to or for members (attach schedule).....	24				
25a Compensation of current officers, directors, key employees, etc. listed in Part V-A.....	25a	149,030.	111,624.	37,406.	0.
b Compensation of former officers, directors, key employees, etc. listed in Part V-B.....	25b	13,900.	0.	13,900.	0.
c Compensation and other distributions, not included above, to disqualified persons (as defined under section 4958(f)(1)) and persons described in section 4958(c)(3)(B).....	25c	0.	0.	0.	0.
26 Salaries and wages of employees not included on lines 25a, b, and c.....	26	106,691.	90,331.	16,360.	
27 Pension plan contributions not included on lines 25a, b, and c.....	27	3,700.	1,739.	1,961.	
28 Employee benefits not included on lines 25a - 27.....	28	7,509.	481.	7,028.	
29 Payroll taxes.....	29	17,476.	8,214.	9,262.	
30 Professional fundraising fees.....	30				
31 Accounting fees.....	31	35,631.	16,747.	18,884.	
32 Legal fees.....	32	3,013.	1,416.	1,597.	
33 Supplies.....	33	8,327.	2,168.	6,159.	
34 Telephone.....	34	7,531.	3,541.	3,990.	
35 Postage and shipping.....	35	17,054.	1,565.	15,489.	
36 Occupancy.....	36	56,679.	26,640.	30,039.	
37 Equipment rental and maintenance.....	37	13,836.	2,555.	11,281.	
38 Printing and publications.....	38	53,509.	793.	52,716.	
39 Travel.....	39	30,648.	21,247.	9,401.	
40 Conferences, conventions, and meetings.....	40	31,209.	27,223.	3,986.	
41 Interest.....	41				
42 Depreciation, depletion, etc (attach schedule).....	42	4,944.	2,324.	2,620.	
43 Other expenses not covered above (itemize):					
a See Statement 2	43a	265,107.	154,957.	110,150.	
b -----	43b				
c -----	43c				
d -----	43d				
e -----	43e				
f -----	43f				
g -----	43g				
44 Total functional expenses. Add lines 22a through 43g. (Organizations completing columns (B) - (D), carry these totals to lines 13 - 15).....	44	825,794.	473,565.	352,229.	0.

Revised DRAFT

Joint Costs. Check if you are following SOP 98-2.

Are any joint costs from a combined educational campaign and fundraising solicitation reported in (B) Program services? Yes No
 If 'Yes,' enter (i) the aggregate amount of these joint costs \$ _____; (ii) the amount allocated to Program services \$ _____; (iii) the amount allocated to Management and general \$ _____; and (iv) the amount allocated to Fundraising \$ _____.

Part IV Balance Sheets (See the instructions.)

Note: Where required, attached schedules and amounts within the description column should be for end-of-year amounts only.		(A) Beginning of year		(B) End of year	
ASSETS	45 Cash - non-interest-bearing	10,604.	45	8,849.	
	46 Savings and temporary cash investments	102,158.	46	11,109.	
	47a Accounts receivable	66,379.			
	b Less: allowance for doubtful accounts		47c	66,379.	
	48a Pledges receivable				
	b Less: allowance for doubtful accounts		48c		
	49 Grants receivable		49		
	50a Receivables from current and former officers, directors, trustees, and key employees (attach schedule)		50a		
	b Receivables from other disqualified persons (as defined under section 4958(f)(1)) and persons described in section 4958(c)(3)(B) (attach schedule)		50b		
	51a Other notes and loans receivable (attach schedule)				
	b Less: allowance for doubtful accounts		51c		
	52 Inventories for sale or use		52		
	53 Prepaid expenses and deferred charges	8,163.	53	6,560.	
	54a Investments - publicly-traded securities	G <input type="checkbox"/> Cost <input checked="" type="checkbox"/> FMV	1,849,238.	54a	1,573,681.
	b Investments - other securities (attach sch)	G <input type="checkbox"/> Cost <input checked="" type="checkbox"/> FMV		54b	
	55a Investments - land, buildings, & equipment: basis	55a			
	b Less: accumulated depreciation (attach schedule)	55b		55c	
	56 Investments - other (attach schedule)			56	
	57a Land, buildings, and equipment: basis	57a 34,486.			
	b Less: accumulated depreciation (attach schedule) <u>Statement 4</u>	57b 23,288.	6,471.	57c	11,198.
58 Other assets, including program-related investments (describe G <u>See Statement 5</u>)		2,938.	58	2,938.	
59 Total assets (must equal line 74). Add lines 45 through 58		1,991,923.	59	1,680,714.	
LIABILITIES	60 Accounts payable and accrued expenses	55,453.	60	65,952.	
	61 Grants payable		61		
	62 Deferred revenue		62		
	63 Loans from officers, directors, trustees, and key employees (attach schedule)		63		
	64a Tax-exempt bond liabilities (attach schedule)		64a		
	b Mortgages and other notes payable (attach schedule)		64b		
	65 Other liabilities (describe G _____)		65		
	66 Total liabilities. Add lines 60 through 65		55,453.	66	65,952.
NET ASSETS OR FUND BALANCES	Organizations that follow SFAS 117, check here G <input checked="" type="checkbox"/> and complete lines 67 through 69 and lines 73 and 74.				
	67 Unrestricted	1,900,790.	67	1,578,864.	
	68 Temporarily restricted	35,680.	68	35,898.	
	69 Permanently restricted		69		
	Organizations that do not follow SFAS 117, check here G <input type="checkbox"/> and complete lines 70 through 74.				
	70 Capital stock, trust principal, or current funds		70		
	71 Paid-in or capital surplus, or land, building, and equipment fund		71		
	72 Retained earnings, endowment, accumulated income, or other funds		72		
	73 Total net assets or fund balances. Add lines 67 through 69 or lines 70 through 72. (Column (A) must equal line 19 and column (B) must equal line 21)		1,936,470.	73	1,614,762.
	74 Total liabilities and net assets/fund balances. Add lines 66 and 73		1,991,923.	74	1,680,714.

Part IV-A Reconciliation of Revenue per Audited Financial Statements with Revenue per Return (See the instructions.)

a	Total revenue, gains, and other support per audited financial statements	a	504,086.
b	Amounts included on line a but not on Part I, line 12:		
	1 Net unrealized gains on investments	b1	-68,747.
	2 Donated services and use of facilities	b2	
	3 Recoveries of prior year grants	b3	
	4 Other (specify): _____	b4	
	Add lines b1 through b4	b	-68,747.
c	Subtract line b from line a	c	572,833.
d	Amounts included on Part I, line 12, but not on line a:		
	1 Investment expenses not included on Part I, line 6b	d1	
	2 Other (specify): _____	d2	
	Add lines d1 and d2	d	
e	Total revenue (Part I, line 12). Add lines c and d	G e	572,833.

Part IV-B Reconciliation of Expenses per Audited Financial Statements with Expenses per Return

a	Total expenses and losses per audited financial statements	a	825,794.
b	Amounts included on line a but not on Part I, line 17:		
	1 Donated services and use of facilities	b1	
	2 Prior year adjustments reported on Part I, line 20	b2	
	3 Losses reported on Part I, line 20	b3	
	4 Other (specify): _____	b4	
	Add lines b1 through b4	b	
c	Subtract line b from line a	c	825,794.
d	Amounts included on Part I, line 17, but not on line a:		
	1 Investment expenses not included on Part I, line 6b	d1	
	2 Other (specify): _____	d2	
	Add lines d1 and d2	d	
e	Total expenses (Part I, line 17). Add lines c and d	G e	825,794.

Revised DRAFT

Part V-A Current Officers, Directors, Trustees, and Key Employees (List each person who was an officer, director, trustee, or key employee at any time during the year even if they were not compensated.) (See the instructions.)

(A) Name and address	(B) Title and average hours per week devoted to position	(C) Compensation (if not paid, enter -0-)	(D) Contributions to employee benefit plans and deferred compensation plans	(E) Expense account and other allowances
See Statement 6		138,105.	10,925.	0.

Part VI Other Information (continued)

		Yes	No
82 a	Did the organization receive donated services or the use of materials, equipment, or facilities at no charge or at substantially less than fair rental value?		X
b	If 'Yes,' you may indicate the value of these items here. Do not include this amount as revenue in Part I or as an expense in Part II. (See instructions in Part III.)		
82 b	N/A		
83 a	Did the organization comply with the public inspection requirements for returns and exemption applications?	X	
b	Did the organization comply with the disclosure requirements relating to quid pro quo contributions?	X	
83 b			
84 a	Did the organization solicit any contributions or gifts that were not tax deductible?		X
b	If 'Yes,' did the organization include with every solicitation an express statement that such contributions or gifts were not tax deductible?		
84 b	N/A		
85 a	501(c)(4), (5), or (6). Were substantially all dues nondeductible by members?		N/A
b	Did the organization make only in-house lobbying expenditures of \$2,000 or less?		N/A
85 b			
If 'Yes' was answered to either 85a or 85b, do not complete 85c through 85h below unless the organization received a waiver for proxy tax owed for the prior year.			
c	Dues, assessments, and similar amounts from members		
85 c	N/A		
d	Section 162(e) lobbying and political expenditures		
85 d	N/A		
e	Aggregate nondeductible amount of section 6033(e)(1)(A) dues notices		
85 e	N/A		
f	Taxable amount of lobbying and political expenditures (line 85d less 85e)		
85 f	N/A		
g	Does the organization elect to pay the section 6033(e) tax on the amount on line 85f?		N/A
85 g			
h	If section 6033(e)(1)(A) dues notices were sent, does the organization agree to add the amount on line 85f to its reasonable estimate of dues allocable to nondeductible lobbying and political expenditures for the following tax year?		N/A
85 h			
86	501(c)(7) organizations. Enter: a Initiation fees and capital contributions included on line 12.		
86 a	N/A		
b	Gross receipts, included on line 12, for public use of club facilities		
86 b	N/A		
87	501(c)(12) organizations. Enter: a Gross income from members or shareholders		
87 a	N/A		
b	Gross income from other sources. (Do not net amounts due or paid to other sources against amounts due or received from them.)		
87 b	N/A		
88 a	At any time during the year, did the organization own a 50% or greater interest in a taxable corporation or partnership, or an entity disregarded as separate from the organization under Regulations sections 301.7701-2 and 301.7701-3? If 'Yes,' complete Part IX.		X
88 a			
b	At any time during the year, did the organization, directly or indirectly, own a controlled entity within the meaning of section 512(b)(13)? If 'Yes,' complete Part XI.	G	X
88 b			
89 a	501(c)(3) organizations. Enter: Amount of tax imposed on the organization during the year under: section 4911 G _____ 0. ; section 4912 G _____ 0. ; section 4955 G _____ 0.		
b	501(c)(3) and 501(c)(4) organizations. Did the organization engage in any section 4958 excess benefit transaction during the year or did it become aware of an excess benefit transaction from a prior year? If 'Yes,' attach a statement explaining each transaction		X
89 b			
c	Enter: Amount of tax imposed on the organization managers or disqualified persons during the year under sections 4912, 4955, and 4958.	G	0.
d	Enter: Amount of tax on line 89c, above, reimbursed by the organization	G	0.
89 c			
e	All organizations. At any time during the tax year, was the organization a party to a prohibited tax shelter transaction?		X
89 e			
f	All organizations. Did the organization acquire a direct or indirect interest in any applicable insurance contract?		X
89 f			
g	For supporting organizations and sponsoring organizations maintaining donor advised funds. Did the supporting organization, or a fund maintained by a sponsoring organization, have excess business holdings at any time during the year?		X
89 g			
90 a	List the states with which a copy of this return is filed G _____ DC _____		
b	Number of employees employed in the pay period that includes March 12, 2007 (See instructions.)	90 b	3
91 a	The books are in care of G THE CENTER Telephone number G 202-237-1854 Located at G 4545 42ND STREET, NW, #309 WASHINGTON DC ZIP + 4 G 20016		
b	At any time during the calendar year, did the organization have an interest in or a signature or other authority over a financial account in a foreign country (such as a bank account, securities account, or other financial account)?		X
91 b			
If 'Yes,' enter the name of the foreign country G _____			
See the instructions for exceptions and filing requirements for Form TD F 90-22.1, Report of Foreign Bank and Financial Accounts.			

Part VI Other Information (continued)

Yes No

c At any time during the calendar year, did the organization maintain an office outside of the United States? 91 c Yes No

If 'Yes,' enter the name of the foreign country G

92 Section 4947(a)(1) nonexempt charitable trusts filing Form 990 in lieu of Form 1041 Check here N/A G

and enter the amount of tax-exempt interest received or accrued during the tax year. G 92 N/A

Part VII Analysis of Income-Producing Activities (See the instructions.)

	Unrelated business income		Excluded by section 512, 513, or 514		(E) Related or exempt function income
	(A) Business code	(B) Amount	(C) Exclusion code	(D) Amount	
93 Program service revenue:					
a AWARDS					15,850.
b FILM SERIES					6,354.
c MEETINGS					9,315.
d PATIENT FEES					44,956.
e TUI TION					276,806.
f Medicare/Medicaid payments					
g Fees & contracts from government agencies					
94 Membership dues and assessments					159,752.
95 Interest on savings & temporary cash invmnts					
96 Dividends & interest from securities			14	121,621.	
97 Net rental income or (loss) from real estate:					
a debt-financed property					
b not debt-financed property					
98 Net rental income or (loss) from pers prop					
99 Other investment income					
100 Gain or (loss) from sales of assets other than inventory					-154,605.
101 Net income or (loss) from special events					
102 Gross profit or (loss) from sales of inventory					
103 Other revenue: a					
b MISCELLANEOUS					17,498.
c					
d					
e					
104 Subtotal (add columns (B), (D), and (E))				121,621.	375,926.
105 Total (add line 104, columns (B), (D), and (E))				G 497,547.	

Revised DRAFT

Note: Line 105 plus line 1e, Part I, should equal the amount on line 12, Part I.

Part VIII Relationship of Activities to the Accomplishment of Exempt Purposes (See the instructions.)

Line No.	Explain how each activity for which income is reported in column (E) of Part VII contributed importantly to the accomplishment of the organization's exempt purposes (other than by providing funds for such purposes).
F	See Statement 7

Part IX Information Regarding Taxable Subsidiaries and Disregarded Entities (See the instructions.)

(A) Name, address, and EIN of corporation, partnership, or disregarded entity	(B) Percentage of ownership interest	(C) Nature of activities	(D) Total income	(E) End-of-year assets
N/A	%			
	%			
	%			
	%			

Part X Information Regarding Transfers Associated with Personal Benefit Contracts (See the instructions.)

a Did the organization, during the year, receive any funds, directly or indirectly, to pay premiums on a personal benefit contract? Yes No

b Did the organization, during the year, pay premiums, directly or indirectly, on a personal benefit contract? Yes No

Note: If 'Yes' to (b), file Form 8870 and Form 4720 (see instructions).

Part XI Information Regarding Transfers To and From Controlled Entities. Complete only if the organization is a controlling organization as defined in section 512(b)(13).

	Yes	No
106 Did the reporting organization make any transfers to a controlled entity as defined in section 512(b)(13) of the Code? If "Yes," complete the schedule below for each controlled entity.....	<input type="checkbox"/>	<input checked="" type="checkbox"/>

	(A) Name, address, of each controlled entity	(B) Employer Identification Number	(C) Description of transfer	(D) Amount of transfer
a	----- -----			
b	----- -----			
c	----- -----			
Totals				

	Yes	No
107 Did the reporting organization receive any transfers from a controlled entity as defined in section 512(b)(13) of the Code? If "Yes," complete the schedule below for each controlled entity.....	<input type="checkbox"/>	<input checked="" type="checkbox"/>

	(A) Name, address, of each controlled entity	(B) Employer Identification Number	(C) Description of transfer	(D) Amount of transfer
a	----- -----			
b	----- -----			
c	----- -----			
Totals				

Revised DRAFT

	Yes	No
108 Did the organization have a binding written contract in effect on August 17, 2006, covering the interest, rents, royalties, and annuities described in question 107 above?.....	<input type="checkbox"/>	<input checked="" type="checkbox"/>

Please Sign Here	Under penalties of perjury, I declare that I have examined this return, including accompanying schedules and statements, and to the best of my knowledge and belief, it is true, correct, and complete. Declaration of preparer (other than officer) is based on all information of which preparer has any knowledge.	
	G _____ Signature of officer	_____ Date
	G _____ Type or print name and title.	

Paid Preparer's Use Only	Preparer's signature	Date	Check if self-employed <input checked="" type="checkbox"/>	Preparer's SSN or PTIN (See General Instruction X)
	Firm's name (or yours if self-employed), address, and ZIP + 4			
	G Mario A. Lopez, CPA			P00637804
	G Berry Group, CPA'S			EIN G 20-3951012
	G 3131 Mount Vernon Avenue			Phone no. G (703) 838-7611
	G Alexandria, VA 22305			

BAA

SCHEDULE A
(Form 990 or 990-EZ)

Organization Exempt Under
Section 501(c)(3)

OMB No. 1545-0047

(Except Private Foundation) and Section 501(e), 501(f), 501(k),
501(n), or 4947(a)(1) Nonexempt Charitable Trust

2007

Department of the Treasury
Internal Revenue Service

Supplementary Information (See separate instructions.)

G MUST be completed by the above organizations and attached to their Form 990 or 990-EZ.

Name of the organization **THE WASHINGTON CENTER FOR PSYCHOANALYSIS, INC.** Employer identification number **53-0213312**

Part I Compensation of the Five Highest Paid Employees Other Than Officers, Directors, and Trustees
(See instructions. List each one. If there are none, enter 'None.')

(a) Name and address of each employee paid more than \$50,000	(b) Title and average hours per week devoted to position	(c) Compensation	(d) Contributions to employee benefit plans and deferred compensation	(e) Expense account and other allowances
See Statement 8		60,000.	3,700.	0.
Total number of other employees paid over \$50,000	G 0			

Part II A Compensation of the Five Highest Paid Independent Contractors for Professional Services
(See instructions. List each one (whether individuals or firms). If there are none, enter 'None.')

(a) Name and address of each independent contractor paid more than \$50,000	(b) Type of service	(c) Compensation
None		
Total number of others receiving over \$50,000 for professional services	G 0	

Part II B Compensation of the Five Highest Paid Independent Contractors for Other Services
(List each contractor who performed services other than professional services, whether individuals or firms. If there are none, enter 'None.' See instructions.)

(a) Name and address of each independent contractor paid more than \$50,000	(b) Type of service	(c) Compensation
None		
Total number of other contractors receiving over \$50,000 for other services	G 0	

Part III Statements About Activities (See instructions.)		Yes	No
1	During the year, has the organization attempted to influence national, state, or local legislation, including any attempt to influence public opinion on a legislative matter or referendum? If 'Yes,' enter the total expenses paid or incurred in connection with the lobbying activities. . . . G \$ <u> N/A </u> (Must equal amounts on line 38, Part VI-A, or line i of Part VI-B.)	1	X
Organizations that made an election under section 501(h) by filing Form 5768 must complete Part VI-A. Other organizations checking 'Yes' must complete Part VI-B AND attach a statement giving a detailed description of the lobbying activities.			
2	During the year, has the organization, either directly or indirectly, engaged in any of the following acts with any substantial contributors, trustees, directors, officers, creators, key employees, or members of their families, or with any taxable organization with which any such person is affiliated as an officer, director, trustee, majority owner, or principal beneficiary? (If the answer to any question is 'Yes,' attach a detailed statement explaining the transactions.)		
a	Sale, exchange, or leasing of property?	2a	X
b	Lending of money or other extension of credit?	2b	X
c	Furnishing of goods, services, or facilities?	2c	X
d	Payment of compensation (or payment or reimbursement of expenses if more than \$1,000)?	2d	X
e	Transfer of any part of its income or assets?	2e	X
3a	Did the organization make grants for scholarships, fellowships, student loans, etc? (If 'Yes,' attach an explanation of how the organization determines that recipients qualify to receive payments.)	3a	X
b	Did the organization have a section 403(b) annuity plan for its employees?	3b	X
c	Did the organization receive or hold an easement for conservation purposes, including easements to preserve open space, the environment, historic land areas or historic structures? If 'Yes,' attach a detailed statement	3c	X
d	Did the organization provide credit counseling, debt management, credit repair, or debt negotiation services?	3d	X
4a	Did the organization maintain any donor advised funds? If 'Yes,' complete lines 4b through 4g. If 'No,' complete lines 4f and 4g.	4a	X
b	Did the organization make any taxable distributions under section 4966?	4b	N/A
c	Did the organization make a distribution to a donor, donor advisor, or related person?	4c	N/A
d	Enter the total number of donor advised funds owned at the end of the tax year. G <u> </u> N/A		
e	Enter the aggregate value of assets held in all donor advised funds owned at the end of the tax year. G <u> </u> N/A		
f	Enter the total number of separate funds or accounts owned at the end of the tax year (excluding donor advised funds included on line 4d) where donors have the right to provide advice on the distribution or investment of amounts in such funds or accounts. G <u> </u> 0		
g	Enter the aggregate value of assets held in all funds or accounts included on line 4f at the end of the tax year. . . . G <u> </u> 0.		

Revised DRAFT

Part IV Reason for Non-Private Foundation Status (See instructions.)

I certify that the organization is not a private foundation because it is: (Please check only ONE applicable box.)

- 5 A church, convention of churches, or association of churches. Section 170(b)(1)(A)(i).
- 6 A school. Section 170(b)(1)(A)(ii). (Also complete Part V.)
- 7 A hospital or a cooperative hospital service organization. Section 170(b)(1)(A)(iii).
- 8 A federal, state, or local government or governmental unit. Section 170(b)(1)(A)(v).
- 9 A medical research organization operated in conjunction with a hospital. Section 170(b)(1)(A)(iii). Enter the hospital's name, city, and state G _____
- 10 An organization operated for the benefit of a college or university owned or operated by a governmental unit. Section 170(b)(1)(A)(iv). (Also complete the Support Schedule in Part IV-A.)
- 11a An organization that normally receives a substantial part of its support from a governmental unit or from the general public. Section 170(b)(1)(A)(vi). (Also complete the Support Schedule in Part IV-A.)
- 11b A community trust. Section 170(b)(1)(A)(vi). (Also complete the Support Schedule in Part IV-A.)
- 12 An organization that normally receives: (1) more than 33-1/3% of its support from contributions, membership fees, and gross receipts from activities related to its charitable, etc., functions ' subject to certain exceptions, and (2) no more than 33-1/3% of its support from gross investment income and unrelated business taxable income (less section 511 tax) from businesses acquired by the organization after June 30, 1975. See section 509(a)(2). (Also complete the Support Schedule in Part IV-A.)
- 13 An organization that is not controlled by any disqualified persons (other than foundation managers) and otherwise meets the requirements of section 509(a)(3). Check the box that describes the type of supporting organization: G
 Type I Type II Type III-Functionally Integrated Type III-Other

Provide the following information about the supported organizations. (See instructions.)

(a) Name(s) of supported organization(s)	(b) Employer identification number (EIN)	(c) Type of organization (described in lines 5 through 12 above or IRC section)	(d) Is the supported organization listed in the supporting organization's governing documents?		(e) Amount of support
			Yes	No	
Total					G 0.

- 14 An organization organized and operated to test for public safety. Section 509(a)(4). (See instructions.)

Part IV-A Support Schedule (Complete only if you checked a box on line 10, 11, or 12.) Use cash method of accounting.

Note: You may use the worksheet in the instructions for converting from the accrual to the cash method of accounting.

Calendar year (or fiscal year beginning in)..... G	(a) 2006	(b) 2005	(c) 2004	(d) 2003	(e) Total
15 Gifts, grants, and contributions received. (Do not include unusual grants. See line 28.)....	62,989.	36,874.	23,251.		123,114.
16 Membership fees received.....	118,940.	107,909.	111,504.		338,353.
17 Gross receipts from admissions, merchandise sold or services performed, or furnishing of facilities in any activity that is related to the organization's charitable, etc. purpose.....					0.
18 Gross income from interest, dividends, amts rec'd from payments on securities loans (sec. 512(a)(5)), rents, royalties, income from similar sources, and unrelated business taxable income (less sec. 511 taxes) from businesses acquired by the organization after June 30, 1975....	102,270.	83,441.	45,098.		230,809.
19 Net income from unrelated business activities not included in line 18.....					0.
20 Tax revenues levied for the organization's benefit and either paid to it or expended on its behalf.....					0.
21 The value of services or facilities furnished to the organization by a governmental unit without charge. Do not include the value of services or facilities generally furnished to the public without charge.....					0.
22 Other income. Attach a schedule. Do not include gain or (loss) from sale of capital assets. See Stmt. 9.....	458.	3,885.	2,332.		6,675.
23 Total of lines 15 through 22.....	284,657.	232,109.	182,185.		698,951.
24 Line 23 minus line 17.....	284,657.	232,109.	182,185.		698,951.
25 Enter 1% of line 23.....	2,847.	2,321.	1,822.		
26 Organizations described on lines 10 or 11: a Enter 2% of amount in column (e), line 24..... G				26a	13,979.
b Prepare a list for your records to show the name of and amount contributed by each person (other than a governmental unit or publicly supported organization) whose total gifts for 2003 through 2006 exceeded the amount shown in line 26a. Do not file this list with your return. Enter the total of all these excess amounts..... G				26b	
c Total support for section 509(a)(1) test: Enter line 24, column (e)..... G				26c	698,951.
d Add: Amounts from column (e) for lines: 18 230,809. 19 _____					
22 6,675. 26b _____				26d	237,484.
e Public support (line 26c minus line 26d total)..... G				26e	461,467.
f Public support percentage (line 26e (numerator) divided by line 26c (denominator))..... G				26f	66.02 %
27 Organizations described on line 12: N/A					
a For amounts included in lines 15, 16, and 17 that were received from a 'disqualified person,' prepare a list for your records to show the name of, and total amounts received in each year from, each 'disqualified person.' Do not file this list with your return. Enter the sum of such amounts for each year: (2006) _____ (2005) _____ (2004) _____ (2003) _____					
b For any amount included in line 17 that was received from each person (other than 'disqualified persons'), prepare a list for your records to show the name of, and amount received for each year, that was more than the larger of (1) the amount on line 25 for the year or (2) \$5,000. (Include in the list organizations described in lines 5 through 11b, as well as individuals.) Do not file this list with your return. After computing the difference between the amount received and the larger amount described in (1) or (2), enter the sum of these differences (the excess amounts) for each year: (2006) _____ (2005) _____ (2004) _____ (2003) _____					
c Add: Amounts from column (e) for lines: 15 _____ 16 _____					
17 _____ 20 _____ 21 _____				27c	
d Add: Line 27a total _____ and line 27b total _____				27d	
e Public support (line 27c total minus line 27d total)..... G				27e	
f Total support for section 509(a)(2) test: Enter amount from line 23, column (e).... G				27f	
g Public support percentage (line 27e (numerator) divided by line 27f (denominator))..... G				27g	%
h Investment income percentage (line 18, column (e) (numerator) divided by line 27f (denominator))..... G				27h	%

28 Unusual Grants: For an organization described in line 10, 11, or 12 that received any unusual grants during 2003 through 2006, prepare a list for your records to show, for each year, the name of the contributor, the date and amount of the grant, and a brief description of the nature of the grant. Do not file this list with your return. Do not include these grants in line 15.

Part V Private School Questionnaire (See instructions.)
 (To be completed ONLY by schools that checked the box on line 6 in Part IV)

N/A

		Yes	No
29	Does the organization have a racially nondiscriminatory policy toward students by statement in its charter, bylaws, other governing instrument, or in a resolution of its governing body?.....		
30	Does the organization include a statement of its racially nondiscriminatory policy toward students in all its brochures, catalogues, and other written communications with the public dealing with student admissions, programs, and scholarships?.....		
31	Has the organization publicized its racially nondiscriminatory policy through newspaper or broadcast media during the period of solicitation for students, or during the registration period if it has no solicitation program, in a way that makes the policy known to all parts of the general community it serves?..... If 'Yes,' please describe; if 'No,' please explain. (If you need more space, attach a separate statement.) ----- ----- -----		
32	Does the organization maintain the following:		
32a	a Records indicating the racial composition of the student body, faculty, and administrative staff?.....		
32b	b Records documenting that scholarships and other financial assistance are awarded on a racially nondiscriminatory basis?.....		
32c	c Copies of all catalogues, brochures, announcements, and other written communications to the public dealing with student admissions, programs, and scholarships?.....		
32d	d Copies of all material used by the organization or on its behalf to solicit contributions?..... If you answered 'No' to any of the above, please explain. (If you need more space, attach a separate statement.) ----- -----		
33	Does the organization discriminate by race in any way with respect to:		
33a	a Students' rights or privileges?.....		
33b	b Admissions policies?.....		
33c	c Employment of faculty or administrative staff?.....		
33d	d Scholarships or other financial assistance?.....		
33e	e Educational policies?.....		
33f	f Use of facilities?.....		
33g	g Athletic programs?.....		
33h	h Other extracurricular activities?..... If you answered 'Yes' to any of the above, please explain. (If you need more space, attach a separate statement.) ----- -----		
34a	Does the organization receive any financial aid or assistance from a governmental agency?.....		
34b	b Has the organization's right to such aid ever been revoked or suspended?..... If you answered 'Yes' to either 34a or b, please explain using an attached statement.		
35	Does the organization certify that it has complied with the applicable requirements of sections 4.01 through 4.05 of Rev Proc 75-50, 1975-2 C.B. 587, covering racial nondiscrimination? If 'No,' attach an explanation.....		

Revised DRAFT

Part VI-A Lobbying Expenditures by Electing Public Charities (See instructions.)
 (To be completed ONLY by an eligible organization that filed Form 5768)

N/A

Check G a if the organization belongs to an affiliated group. Check G b if you checked 'a' and 'limited control' provisions apply.

Limits on Lobbying Expenditures		(a) Affiliated group totals	(b) To be completed for all electing organizations																						
(The term 'expenditures' means amounts paid or incurred.)																									
36	Total lobbying expenditures to influence public opinion (grassroots lobbying).....	36																							
37	Total lobbying expenditures to influence a legislative body (direct lobbying).....	37																							
38	Total lobbying expenditures (add lines 36 and 37).....	38																							
39	Other exempt purpose expenditures.....	39																							
40	Total exempt purpose expenditures (add lines 38 and 39).....	40																							
41	Lobbying nontaxable amount. Enter the amount from the following table ' <table border="0" style="margin-left: 20px;"> <tr> <td>If the amount on line 40 is ' <table border="0" style="margin-left: 20px;"> <tr> <td>Not over \$500,000.....</td> <td>20% of the amount on line 40.....</td> </tr> <tr> <td>Over \$500,000 but not over \$1,000,000.....</td> <td>\$100,000 plus 15% of the excess over \$500,000.....</td> </tr> <tr> <td>Over \$1,000,000 but not over \$1,500,000.....</td> <td>\$175,000 plus 10% of the excess over \$1,000,000.....</td> </tr> <tr> <td>Over \$1,500,000 but not over \$17,000,000.....</td> <td>\$225,000 plus 5% of the excess over \$1,500,000.....</td> </tr> <tr> <td>Over \$17,000,000.....</td> <td>\$1,000,000.....</td> </tr> </table> </td> <td>The lobbying nontaxable amount is ' <table border="0" style="margin-left: 20px;"> <tr> <td>Not over \$500,000.....</td> <td>20% of the amount on line 40.....</td> </tr> <tr> <td>Over \$500,000 but not over \$1,000,000.....</td> <td>\$100,000 plus 15% of the excess over \$500,000.....</td> </tr> <tr> <td>Over \$1,000,000 but not over \$1,500,000.....</td> <td>\$175,000 plus 10% of the excess over \$1,000,000.....</td> </tr> <tr> <td>Over \$1,500,000 but not over \$17,000,000.....</td> <td>\$225,000 plus 5% of the excess over \$1,500,000.....</td> </tr> <tr> <td>Over \$17,000,000.....</td> <td>\$1,000,000.....</td> </tr> </table> </td> </tr> </table>	If the amount on line 40 is ' <table border="0" style="margin-left: 20px;"> <tr> <td>Not over \$500,000.....</td> <td>20% of the amount on line 40.....</td> </tr> <tr> <td>Over \$500,000 but not over \$1,000,000.....</td> <td>\$100,000 plus 15% of the excess over \$500,000.....</td> </tr> <tr> <td>Over \$1,000,000 but not over \$1,500,000.....</td> <td>\$175,000 plus 10% of the excess over \$1,000,000.....</td> </tr> <tr> <td>Over \$1,500,000 but not over \$17,000,000.....</td> <td>\$225,000 plus 5% of the excess over \$1,500,000.....</td> </tr> <tr> <td>Over \$17,000,000.....</td> <td>\$1,000,000.....</td> </tr> </table>	Not over \$500,000.....	20% of the amount on line 40.....	Over \$500,000 but not over \$1,000,000.....	\$100,000 plus 15% of the excess over \$500,000.....	Over \$1,000,000 but not over \$1,500,000.....	\$175,000 plus 10% of the excess over \$1,000,000.....	Over \$1,500,000 but not over \$17,000,000.....	\$225,000 plus 5% of the excess over \$1,500,000.....	Over \$17,000,000.....	\$1,000,000.....	The lobbying nontaxable amount is ' <table border="0" style="margin-left: 20px;"> <tr> <td>Not over \$500,000.....</td> <td>20% of the amount on line 40.....</td> </tr> <tr> <td>Over \$500,000 but not over \$1,000,000.....</td> <td>\$100,000 plus 15% of the excess over \$500,000.....</td> </tr> <tr> <td>Over \$1,000,000 but not over \$1,500,000.....</td> <td>\$175,000 plus 10% of the excess over \$1,000,000.....</td> </tr> <tr> <td>Over \$1,500,000 but not over \$17,000,000.....</td> <td>\$225,000 plus 5% of the excess over \$1,500,000.....</td> </tr> <tr> <td>Over \$17,000,000.....</td> <td>\$1,000,000.....</td> </tr> </table>	Not over \$500,000.....	20% of the amount on line 40.....	Over \$500,000 but not over \$1,000,000.....	\$100,000 plus 15% of the excess over \$500,000.....	Over \$1,000,000 but not over \$1,500,000.....	\$175,000 plus 10% of the excess over \$1,000,000.....	Over \$1,500,000 but not over \$17,000,000.....	\$225,000 plus 5% of the excess over \$1,500,000.....	Over \$17,000,000.....	\$1,000,000.....	41	
If the amount on line 40 is ' <table border="0" style="margin-left: 20px;"> <tr> <td>Not over \$500,000.....</td> <td>20% of the amount on line 40.....</td> </tr> <tr> <td>Over \$500,000 but not over \$1,000,000.....</td> <td>\$100,000 plus 15% of the excess over \$500,000.....</td> </tr> <tr> <td>Over \$1,000,000 but not over \$1,500,000.....</td> <td>\$175,000 plus 10% of the excess over \$1,000,000.....</td> </tr> <tr> <td>Over \$1,500,000 but not over \$17,000,000.....</td> <td>\$225,000 plus 5% of the excess over \$1,500,000.....</td> </tr> <tr> <td>Over \$17,000,000.....</td> <td>\$1,000,000.....</td> </tr> </table>	Not over \$500,000.....	20% of the amount on line 40.....	Over \$500,000 but not over \$1,000,000.....	\$100,000 plus 15% of the excess over \$500,000.....	Over \$1,000,000 but not over \$1,500,000.....	\$175,000 plus 10% of the excess over \$1,000,000.....	Over \$1,500,000 but not over \$17,000,000.....	\$225,000 plus 5% of the excess over \$1,500,000.....	Over \$17,000,000.....	\$1,000,000.....	The lobbying nontaxable amount is ' <table border="0" style="margin-left: 20px;"> <tr> <td>Not over \$500,000.....</td> <td>20% of the amount on line 40.....</td> </tr> <tr> <td>Over \$500,000 but not over \$1,000,000.....</td> <td>\$100,000 plus 15% of the excess over \$500,000.....</td> </tr> <tr> <td>Over \$1,000,000 but not over \$1,500,000.....</td> <td>\$175,000 plus 10% of the excess over \$1,000,000.....</td> </tr> <tr> <td>Over \$1,500,000 but not over \$17,000,000.....</td> <td>\$225,000 plus 5% of the excess over \$1,500,000.....</td> </tr> <tr> <td>Over \$17,000,000.....</td> <td>\$1,000,000.....</td> </tr> </table>	Not over \$500,000.....	20% of the amount on line 40.....	Over \$500,000 but not over \$1,000,000.....	\$100,000 plus 15% of the excess over \$500,000.....	Over \$1,000,000 but not over \$1,500,000.....	\$175,000 plus 10% of the excess over \$1,000,000.....	Over \$1,500,000 but not over \$17,000,000.....	\$225,000 plus 5% of the excess over \$1,500,000.....	Over \$17,000,000.....	\$1,000,000.....				
Not over \$500,000.....	20% of the amount on line 40.....																								
Over \$500,000 but not over \$1,000,000.....	\$100,000 plus 15% of the excess over \$500,000.....																								
Over \$1,000,000 but not over \$1,500,000.....	\$175,000 plus 10% of the excess over \$1,000,000.....																								
Over \$1,500,000 but not over \$17,000,000.....	\$225,000 plus 5% of the excess over \$1,500,000.....																								
Over \$17,000,000.....	\$1,000,000.....																								
Not over \$500,000.....	20% of the amount on line 40.....																								
Over \$500,000 but not over \$1,000,000.....	\$100,000 plus 15% of the excess over \$500,000.....																								
Over \$1,000,000 but not over \$1,500,000.....	\$175,000 plus 10% of the excess over \$1,000,000.....																								
Over \$1,500,000 but not over \$17,000,000.....	\$225,000 plus 5% of the excess over \$1,500,000.....																								
Over \$17,000,000.....	\$1,000,000.....																								
42	Grassroots nontaxable amount (enter 25% of line 41).....	42																							
43	Subtract line 42 from line 36. Enter -0- if line 42 is more than line 36.....	43																							
44	Subtract line 41 from line 38. Enter -0- if line 41 is more than line 38.....	44																							
Caution: If there is an amount on either line 43 or line 44, you must file Form 4720.																									

4 -Year Averaging Period Under Section 501(h)

(Some organizations that made a section 501(h) election do not have to complete all of the five columns below.
 See the instructions for lines 45 through 50.)

Calendar year (or fiscal year beginning in) G	Lobbying Expenditures During 4 -Year Averaging Period				(e) Total
	(a) 2007	(b) 2006	(c) 2005	(d) 2004	
45	Lobbying nontaxable amount.....				
46	Lobbying ceiling amount (150% of line 45(e)).....				
47	Total lobbying expenditures.....				
48	Grassroots non-taxable amount.....				
49	Grassroots ceiling amount (150% of line 48(e)).....				
50	Grassroots lobbying expenditures.....				

Part VI-B Lobbying Activity by Nonelecting Public Charities

(For reporting only by organizations that did not complete Part VI-A) (See instructions.)

N/A

During the year, did the organization attempt to influence national, state or local legislation, including any attempt to influence public opinion on a legislative matter or referendum, through the use of:	Yes	No	Amount
a Volunteers.....			
b Paid staff or management (Include compensation in expenses reported on lines c through h.).....			
c Media advertisements.....			
d Mailings to members, legislators, or the public.....			
e Publications, or published or broadcast statements.....			
f Grants to other organizations for lobbying purposes.....			
g Direct contact with legislators, their staffs, government officials, or a legislative body.....			
h Rallies, demonstrations, seminars, conventions, speeches, lectures, or any other means.....			
i Total lobbying expenditures (add lines c through h.).....			

If 'Yes' to any of the above, also attach a statement giving a detailed description of the lobbying activities.

Schedule of Contributors

Supplementary Information for
line 1 of Form 990, 990-EZ and 990-PF (see instructions)

2007

Name of organization	THE WASHINGTON CENTER FOR PSYCHOANALYSIS, INC.	Employer identification number	53-0213312
----------------------	---	--------------------------------	------------

Organization type (check one):

Filers of:

Form 990 or 990-EZ

Section:

- 501(c)(3) (enter number) organization
- 4947(a)(1) nonexempt charitable trust not treated as a private foundation
- 527 political organization

Form 990-PF

- 501(c)(3) exempt private foundation
- 4947(a)(1) nonexempt charitable trust treated as a private foundation
- 501(c)(3) taxable private foundation

Check if your organization is covered by the General Rule or a Special Rule. (Note: Only a section 501(c)(7), (8), or (10) organization can check boxes for both the General Rule and a Special Rule - see instructions.)

General Rule *

- For organizations filing Form 990, 990-EZ, or 990-PF that received, during the year, \$5,000 or more (in money or property) from any one contributor. (Complete Parts I and II.)

Special Rules *

- For a section 501(c)(3) organization filing Form 990, or Form 990-EZ, that met the 33-1/3% support test of the regulations under sections 509(a)(1)/170(b)(1)(A)(vi) and received from any one contributor, during the year, a contribution of the greater of \$5,000 or 2% of the amount on line 1 of these forms. (Complete Parts I and II.)
- For a section 501(c)(7), (8), or (10) organization filing Form 990, or Form 990-EZ, that received from any one contributor, during the year, aggregate contributions or bequests of more than \$1,000 for use exclusively for religious, charitable, scientific, literary, or educational purposes, or the prevention of cruelty to children or animals. (Complete Parts I, II, and III.)
- For a section 501(c)(7), (8), or (10) organization filing Form 990, or Form 990-EZ, that received from any one contributor, during the year, some contributions for use exclusively for religious, charitable, etc. purposes, but these contributions did not aggregate to more than \$1,000. (If this box is checked, enter here the total contributions that were received during the year for an exclusively religious, charitable, etc. purpose. Do not complete any of the Parts unless the General Rule applies to this organization because it received nonexclusively religious, charitable, etc. contributions of \$5,000 or more during the year.) G \$ _____

Caution: Organizations that are not covered by the General Rule and/or the Special Rules do not file Schedule B (Form 990, 990-EZ, or 990-PF) but they *must* check the box in the heading of their Form 990, Form 990-EZ, or on line 2 of their Form 990-PF, to certify that they do not meet the filing requirements of Schedule B (Form 990, 990-EZ, or 990-PF).

BAA For Paperwork Reduction Act Notice, see the Instructions for Form 990, Form 990-EZ, and Form 990-PF.

Schedule B (Form 990, 990-EZ, or 990-PF) (2007)

Name of organization

Employer identification number

THE WASHINGTON CENTER FOR

53-0213312

Part I Contributors (See Specific Instructions.)

(a) Number	(b) Name, address, and ZIP + 4	(c) Aggregate contributions	(d) Type of contribution
1	Viola W. Bernard Foundation 601 Walnut Street, Ste 960 Philadelphia, PA 19106	\$ 25,000.	Person <input checked="" type="checkbox"/> Payroll <input type="checkbox"/> Noncash <input type="checkbox"/> (Complete Part II if there is a noncash contribution.)
2	The Ernest & Rose Samuel s Fdtn 8 Hillcrest Lane Woodbury, NY 11797-1102	\$ 10,000.	Person <input checked="" type="checkbox"/> Payroll <input type="checkbox"/> Noncash <input type="checkbox"/> (Complete Part II if there is a noncash contribution.)
---	-----	\$ -----	Person <input type="checkbox"/> Payroll <input type="checkbox"/> Noncash <input type="checkbox"/> (Complete Part II if there is a noncash contribution.)
---	-----	\$ -----	Person <input type="checkbox"/> Payroll <input type="checkbox"/> Noncash <input type="checkbox"/> (Complete Part II if there is a noncash contribution.)
---	-----	\$ -----	Person <input type="checkbox"/> Payroll <input type="checkbox"/> Noncash <input type="checkbox"/> (Complete Part II if there is a noncash contribution.)
---	-----	\$ -----	Person <input type="checkbox"/> Payroll <input type="checkbox"/> Noncash <input type="checkbox"/> (Complete Part II if there is a noncash contribution.)

Revised DRAFT

Name of organization

Employer identification number

THE WASHINGTON CENTER FOR

53-0213312

Part II Noncash Property (See Specific Instructions.)

(a) No. from Part I	(b) Description of noncash property given	(c) FMV (or estimate) (see instructions)	(d) Date received
_____	N/A ----- ----- -----	\$-----	-----
_____	----- ----- -----	\$-----	-----
_____	----- ----- -----	\$-----	-----
_____	----- ----- -----	\$-----	-----
_____	----- ----- -----	\$-----	-----
_____	----- ----- -----	\$-----	-----

Revised DRAFT

Name of organization

Employer identification number

THE WASHINGTON CENTER FOR

53-0213312

Part III Exclusively religious, charitable, etc., individual contributions to section 501(c)(7), (8), or (10) organizations aggregating more than \$1,000 for the year. (Complete cols (a) through (e) and the following line entry.)

For organizations completing Part III, enter total of exclusively religious, charitable, etc., contributions of \$1,000 or less for the year. (Enter this information once - see instructions.) G \$ N/A

(a) No. from Part I	(b) Purpose of gift	(c) Use of gift	(d) Description of how gift is held
	N/A		

(e) Transfer of gift	
Transferee's name, address, and ZIP + 4	Relationship of transferor to transferee

(a) No. from Part I	(b) Purpose of gift	(c) Use of gift	(d) Description of how gift is held

(e) Transfer of gift	
Transferee's name, address, and ZIP + 4	Relationship of transferor to transferee

(a) No. from Part I	(b) Purpose of gift	(c) Use of gift	(d) Description of how gift is held

(e) Transfer of gift	
Transferee's name, address, and ZIP + 4	Relationship of transferor to transferee

(a) No. from Part I	(b) Purpose of gift	(c) Use of gift	(d) Description of how gift is held

(e) Transfer of gift	
Transferee's name, address, and ZIP + 4	Relationship of transferor to transferee

Revised DRAFT

Statement 1
Form 990, Part I, Line 20
Other Changes in Net Assets or Fund Balances

Unrealized loss on investments, net.....	\$	-68,747.
Total	\$	<u>-68,747.</u>

Statement 2
Form 990, Part II, Line 43
Other Expenses

	(A) Total	(B) Program Services	(C) Management & General	(D) Fundrai si ng
ADVERTISING	12,048.	769.	11,279.	
AWARDS AND GIFTS	751.	715.	36.	
BANK CHARGES	21,618.	10,161.	11,457.	
DUES AND SUBSCRIPTION	18,821.		18,821.	
HONORARIA	46,250.	46,250.		
INSURANCE	14,515.	6,821.	7,694.	
LICENSES, TAXES AND FEES	698.		698.	
MEALS AND ENTERTAINMENT	4,640.	3,847.	793.	
MISCELLANEOUS	16,559.	10,238.	6,321.	
MNGT. FEES/CONSULTANTS	33,920.	12,457.	21,463.	
POOL RATE	40,321.	40,321.		
SERVICE CONTRACTS	18,578.	6,275.	12,298.	
UTILITIES	3,644.	1,713.	1,931.	
WEBPAGE	32,749.	15,390.	17,359.	
Total	<u>\$ 265,107.</u>	<u>\$ 154,957.</u>	<u>\$ 110,150.</u>	<u>\$ 0.</u>

Statement 3
Form 990, Part III
Organization's Primary Exempt Purpose

TO FOSTER THE STUDY AND ADVANCEMENT OF PSYCHOANALYSIS AND, THROUGH ITS EDUCATION COMMITTEE, TO ESTABLISH AND CONDUCT TRAINING IN PSYCHOANALYSIS. IT IS ALSO THE FUNCTION OF THE ORGANIZATION TO GIVE OFFICIAL RECOGNITION TO THOSE WHO HAVE MET THE REQUIRED STANDARDS OF TRAINING; TO CONDUCT SCIENTIFIC MEETINGS; TO REPRESENT PSYCHOANALYSIS IN THE COMMUNITY; AND ENGAGE IN RESEARCH.

Statement 4
Form 990, Part IV, Line 57
Land, Buildings, and Equipment

Category	Basis	Accum. Deprec.	Book Value
Furniture and Fixtures	\$ 13,382.	\$ 7,891.	\$ 5,491.
Machinery and Equipment	21,104.	15,397.	5,707.
Total	<u>\$ 34,486.</u>	<u>\$ 23,288.</u>	<u>\$ 11,198.</u>

10/13/08

10:41AM

Statement 5
Form 990, Part IV, Line 58
Other Assets

DEPOSITS	Total	\$	2,938.
		\$	<u>2,938.</u>

Statement 6
Form 990, Part V-A
List of Officers, Directors, Trustees, and Key Employees

<u>Name and Address</u>	<u>Title and Average Hours Per Week Devoted</u>	<u>Compen- sation</u>	<u>Contri- bution to EBP & DC</u>	<u>Expense Account/ Other</u>
CHRISTOPHER KEATS, M. D. 2 WISCONSIN CIRCLE CHEVY CHASE, MD 20815	BOARD OF DIR. 5.00	\$ 0.	\$ 0.	\$ 0.
ELISE BLAIR, LCSW 5116 LOWELL LANE, NW WASHINGTON, DC 20016	President 14.00	0.	0.	0.
MARTHA B. MARTIN, M. D. 12106 WHIPPOORWILL LANE ROCKVILLE, MD 20852	Secretary 3.00	0.	0.	0.
HERBERT S. GROSS, M. D. 6416 DANVILLE COURT ROCKVILLE, MD 20852	Treasurer 4.00	0.	0.	0.
JON K. MEYER, M. D. 2210 DALEWOOD ROAD LUTHERVILLE, MD 21093	BOARD OF DIR. 1.00	0.	0.	0.
LINDA STERN, Ph. D. 5454 WISCONSIN AVENUE CHEVY CHASE, MD 20815	BOARD OF DIR. 4.00	0.	0.	0.
JAMES P. BLAIR 5116 LOWELL LANE, NW WASHINGTON, DC 20016	BOARD OF DIR. 2.00	0.	0.	0.
DEBORAH BLESSING, LICSW 1400 20TH STREET, NW WASHINGTON, DC 20036	BOARD OF DIR. 5.00	0.	0.	0.
ARLENE ALTMAN, M. A. 520 N STREET, NW WASHINGTON, DC 20024	BOARD OF DIR. 1.00	0.	0.	0.
MARGARITA CERREJIDO, Ph. D. 1913 S TREET, NW WASHINGTON, DC 20009	BOARD OF DIR. 1.00	0.	0.	0.

Statement 6 (continued)
Form 990, Part V-A
List of Officers, Directors, Trustees, and Key Employees

Name and Address	Title and Average Hours Per Week Devoted	Compen- sation	Contri- bution to EBP & DC	Expense Account/ Other
MI CHAEL J. NI ZANKIEWICZ, Ph. D. 4545 42ND STREET, NW WASHINGTON, DC 20016	Executive Direc 40.00	\$ 138,105.	\$ 10,925.	\$ 0.
JOANNE GOLD, M. A. 2 BLYTHEWOOD ROAD BALTIMORE, MD 21210	BOARD OF DIR. 2.00	0.	0.	0.
LARRY MOSCOW 3010 SUSANNE COURT OWINGS MILLS, MD 21117	BOARD OF DIR. 1.00	0.	0.	0.
JONATHAN HALPERIN 5609 BELMONT AVENUE CHEVY CHASE, MD 20815	BOARD OF DIR. 1.00	0.	0.	0.
ELIZABETH K. HERSH, M. D. 2015 R STREET, NW WASHINGTON, DC 20009	BOARD OF DIR. 5.00	0.	0.	0.
DAVID I. JOSEPH, M. D. 1904 R STREET, NW WASHINGTON, DC 20009	BOARD OF DIR. 7.00	0.	0.	0.
MARC S. LEVINE, M. D. 11513 WEST HILL DRIVE ROCKVILLE, MD 20852	BOARD OF DIR. 4.00	0.	0.	0.
KARYNE E. MESSINA, Ed. D. 2 WISCONSIN CIRCLE CHEVY CHASE, MD 20815	Vice President 8.00	0.	0.	0.
RICHARD C. FRITSCH, Ph. D. 4701 WILLARD AVENUE CHEVY CHASE, MD 20815	BOARD OF DIR. 7.00	0.	0.	0.
RICHARD S. RODIN 5610 WISCONSIN AVENUE CHEVY CHASE, MD 20815	BOARD OF DIR. 2.00	0.	0.	0.
NANCY BEER TOBIN 3538 PORTER STREET, NW WASHINGTON, DC 20016	BOARD OF DIR. 3.00	0.	0.	0.
	Total	\$ 138,105.	\$ 10,925.	\$ 0.

Revised DRAFT

10/13/08

10:41AM

Statement 7
Form 990, Part VIII
Relationship of Activities to the Accomplishment of Exempt Purposes

Line #	Explanation of Activities
93a	AWARDS EVENTS ARE HELD TO ACKNOWLEDGE THE GRADUATES AS WELL AS THE DISTINGUISHED SERVICE OF THE FACULTY AND OTHERS. ALL FACULTY, COMMITTEE MEMBERS, AND OFFICERS SERVE IN AN UNPAID CAPACITY. ALL INCOME IS USED TO SUPPORT THE EDUCATIONAL PROGRAMS.
93b	THE FILM SERIES IS PLANNED AND IMPLEMENTED IN ACCORDANCE WITH SPECIFIC EDUCATIONAL OBJECTIVES TO ENABLE PARTICIPANTS TO IDENTIFY PSYCHOANALYTIC CONCEPTS, AND TO ENABLE PARTICIPANTS TO IDENTIFY TENETS OF PSYCHOANALYTIC THEORY AS DEPICTED IN FILM CHARACTERS.
93c	MEETINGS ARE PROGRAMS THAT ENABLE CLINICIANS-MEMBERS TO MEET THE EDUCATIONAL REQUIREMENTS OF THEIR RESPECTIVE DISCIPLINES FOR PROFESSIONAL POST-GRADUATE CONTINUING EDUCATION CREDITS FOR RENEWAL OF LICENSE.
93d	PATIENT FEES ARE RECEIVED FROM THE LOW-FEE CLINIC PROGRAM. THOSE PATIENTS ACCEPTED INTO THE LOW-FEE CLINIC ARE CHARGED A FEE BASED ON THEIR ABILITY TO PAY. THIS LOW FEE PROGRAM HELPS INDIVIDUALS IN THE COMMUNITY WHO NEED GOOD MENTAL HEALTH TREATMENT AND WHO CAN NOT AFFORD MORE EXPENSIVE TREATMENT. THE TREATMENT IS PROVIDED BY THE MEMBERS AND THE STUDENTS AS A COMMUNITY SERVICE.
93e	TUITION FEES ARE RECEIVED FROM PROGRAM PARTICIPANTS WHO HAVE ENROLLED TO INCREASE THEIR CLINICAL KNOWLEDGE ENABLING THEM TO PROVIDE BETTER TREATMENT, CARE AND OPTIONS FOR THEIR PATIENTS.
94	TO SUPPORT THE STUDY, PROMOTION AND ADVANCEMENT OF PSYCHOANALYSIS, AND TO SUPPORT THE SUPERVISION OF PSYCHOANALYTIC EDUCATION DONE BY THE ORGANIZATION.
103b	OTHER REVENUE INCLUDES MISCELLANEOUS SOURCES OF INCOME USED TO PROMOTE THE EXEMPT PURPOSE OF THE ORGANIZATION.

Statement 8
Schedule A, Part I
Compensation of Five Highest Paid Employees

Name and Address	Title & Average Hours Worked	Compensation	Contribution EBP & DC	Expense Account
Mathilde N. Grant 4545 42nd Street, NW Washington, DC 20016	Dir. of Adm n. 40.00	60,000.	3,700.	0.
Total		\$ 60,000.	\$ 3,700.	\$ 0.

Statement 9
Schedule A, Part IV-A, Line 22
Other Income

Description	(a) 2006	(b) 2005	(c) 2004	(d) 2003	(e) Total
OTHER REVENUE	\$ 458.	\$ 3,885.	\$ 2,332.	\$ 0.	\$ 6,675.
Total	<u>\$ 458.</u>	<u>\$ 3,885.</u>	<u>\$ 2,332.</u>	<u>\$ 0.</u>	<u>\$ 6,675.</u>

Revised DRAFT